

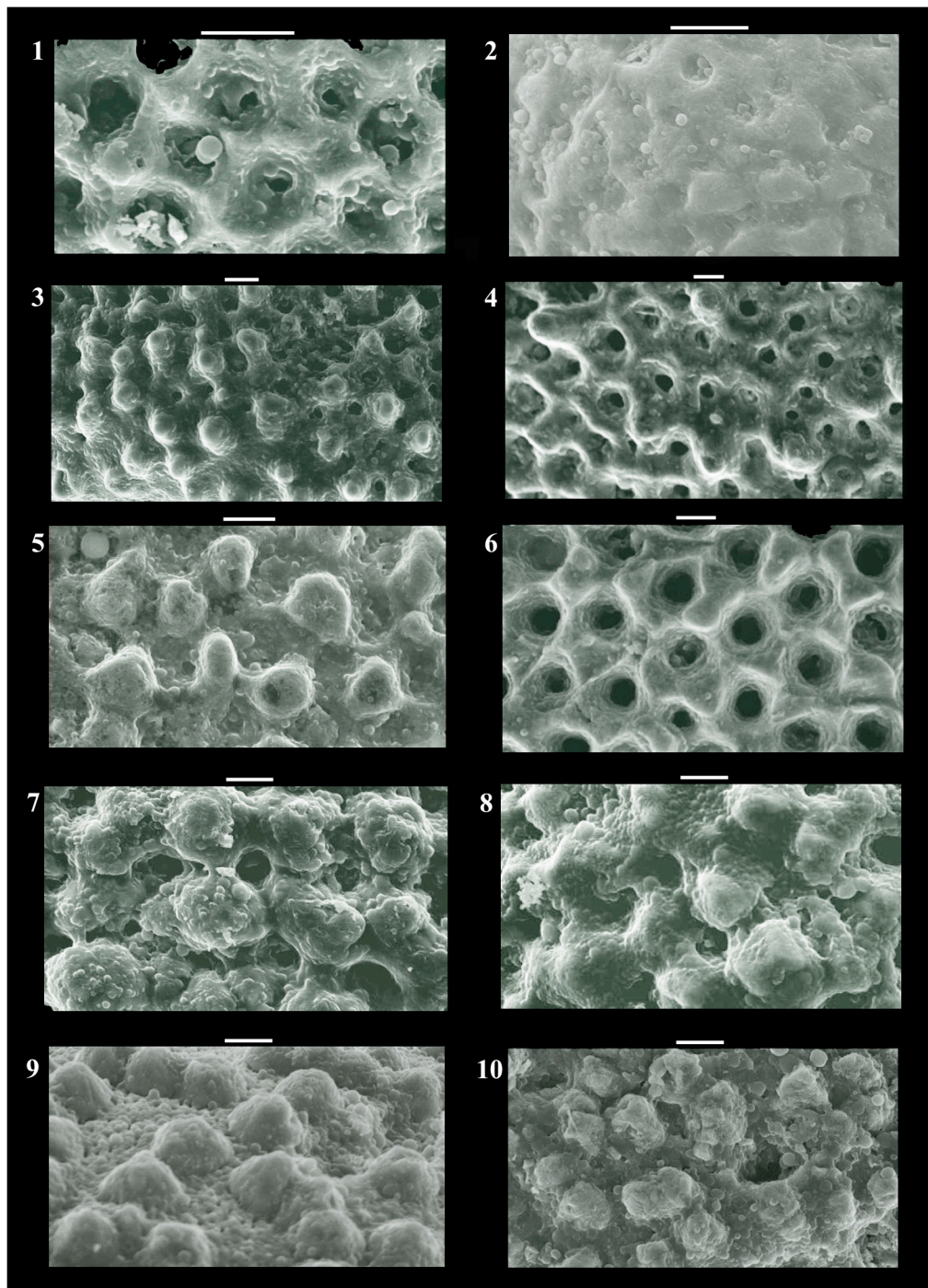
Spinose and Nonspinose Wall Texture. Cipro (left) and Carapita (right) Plate 1

Plate 1. **1.** *Globigerina angulisuturalis* (RDL-2699). **2.** *Globigerina ciperoensis* (WA 8780'-8790')
3. *Globigerinoides trilobus* (RO-1). **4.** *Globigerinoides trilobus* (BO-287). **5.** *Orbulina universa*
(RDL-538). **6.** *Orbulina universa* (RO-47). **7.** *Catapsydrax dissimilis dissimilis* (BO-287). **8.**
Catapsydrax dissimilis dissimilis (RO-25). **9-10.** *Globigerinatella insueta* (RDL-563). Figures 1-10:
bars= 10 μ m.

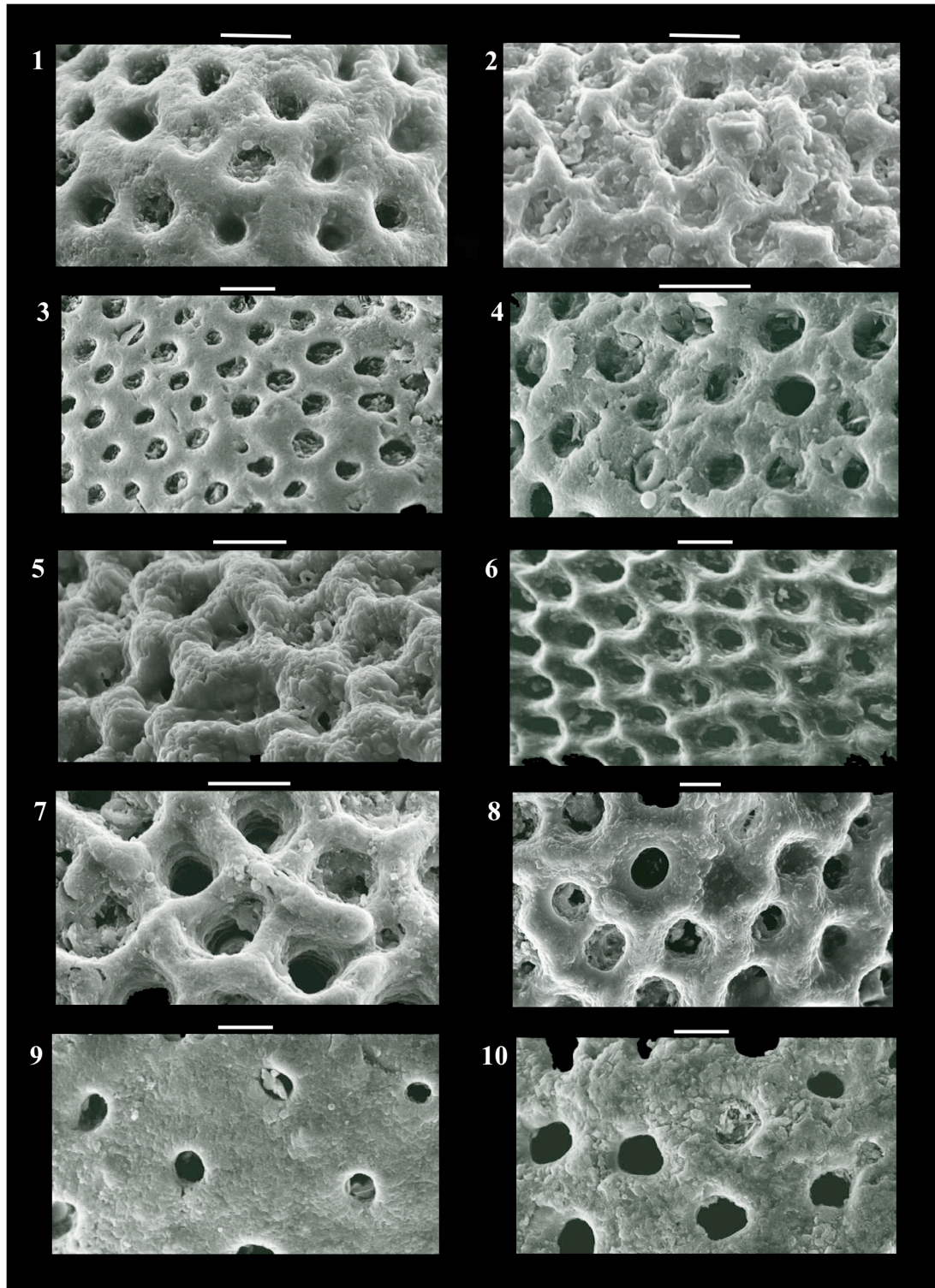
Spinose and Nonspinose Wall Texture. Ciperio (left) and Carapita (right) Plate 2

Plate 2. 1. *?Neogloboquadrina siakensis* (BO-287). 2. *?Neogloboquadrina siakensis* (RO-1). 3. *Globorotalia scitula* (RDL-538). 4. *Globorotalia scitula* (WA 5240'-5260'). 5. *Dentoglobigerina venezuelana* (BO-287). 6. *Dentoglobigerina venezuelana* (RO-1). 7. *Dentoglobigerina altispira globosa* (BO-287). 8. *Dentoglobigerina altispira globosa* (RO-1). 9. *Sphaeroidinellopsis disjuncta* (RDL-563). 10. *Sphaeroidinellopsis seminulina seminulina* (WA 5510'-5540'). Figures 1-10: bars= 10 μ m.

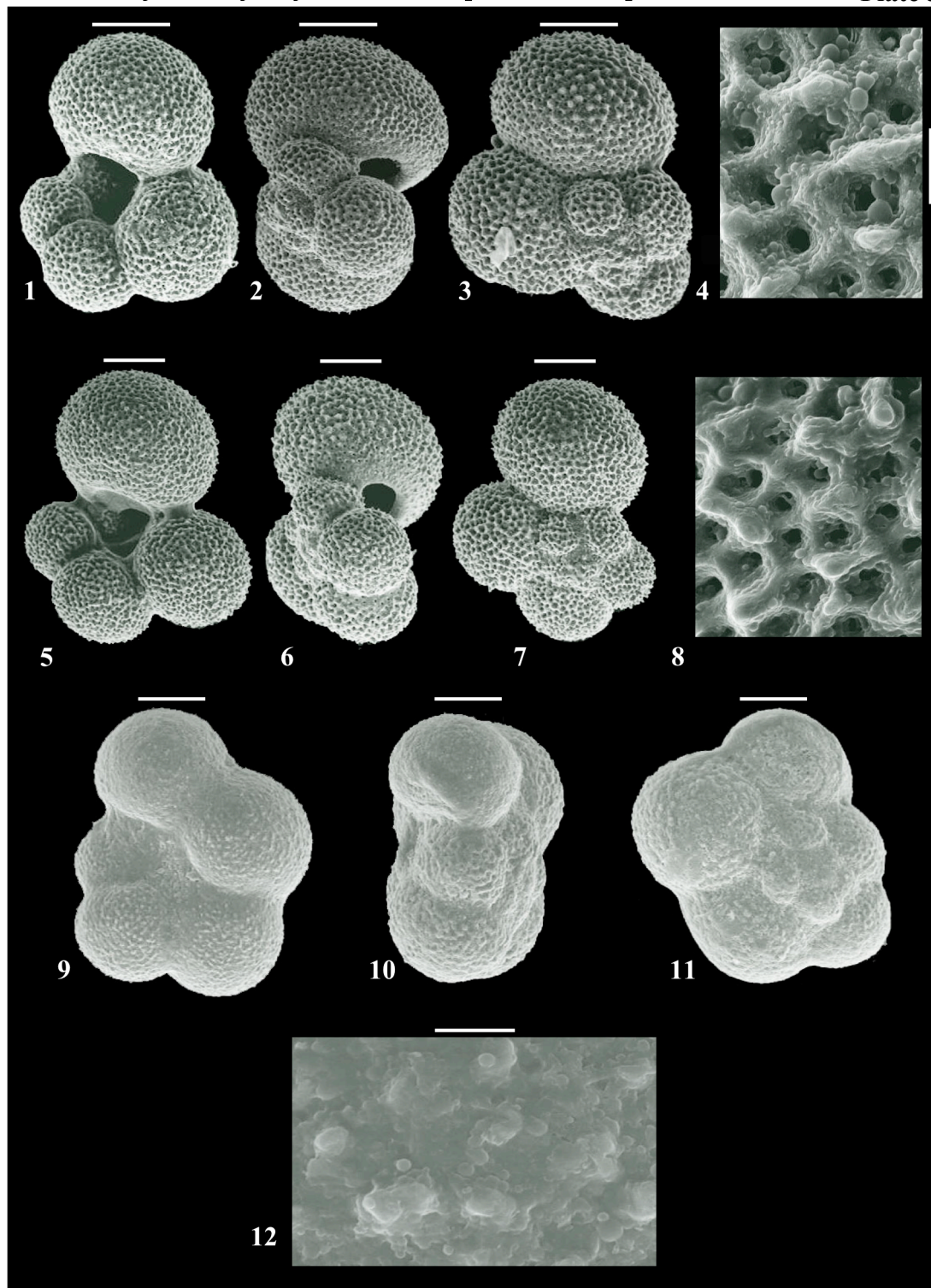


Plate 3. **1-8.** *Globigerina ciperoensis* group; Sample BO-287, Cipro Formation. **9-12.** *Globigerina ciperoensis*; Sample WA 8780'-8790', Carapita Formation. Figures 1-3,5-7,9-11: bars= 200 μm ; Figures 4,8,12: bars= 100 μm .

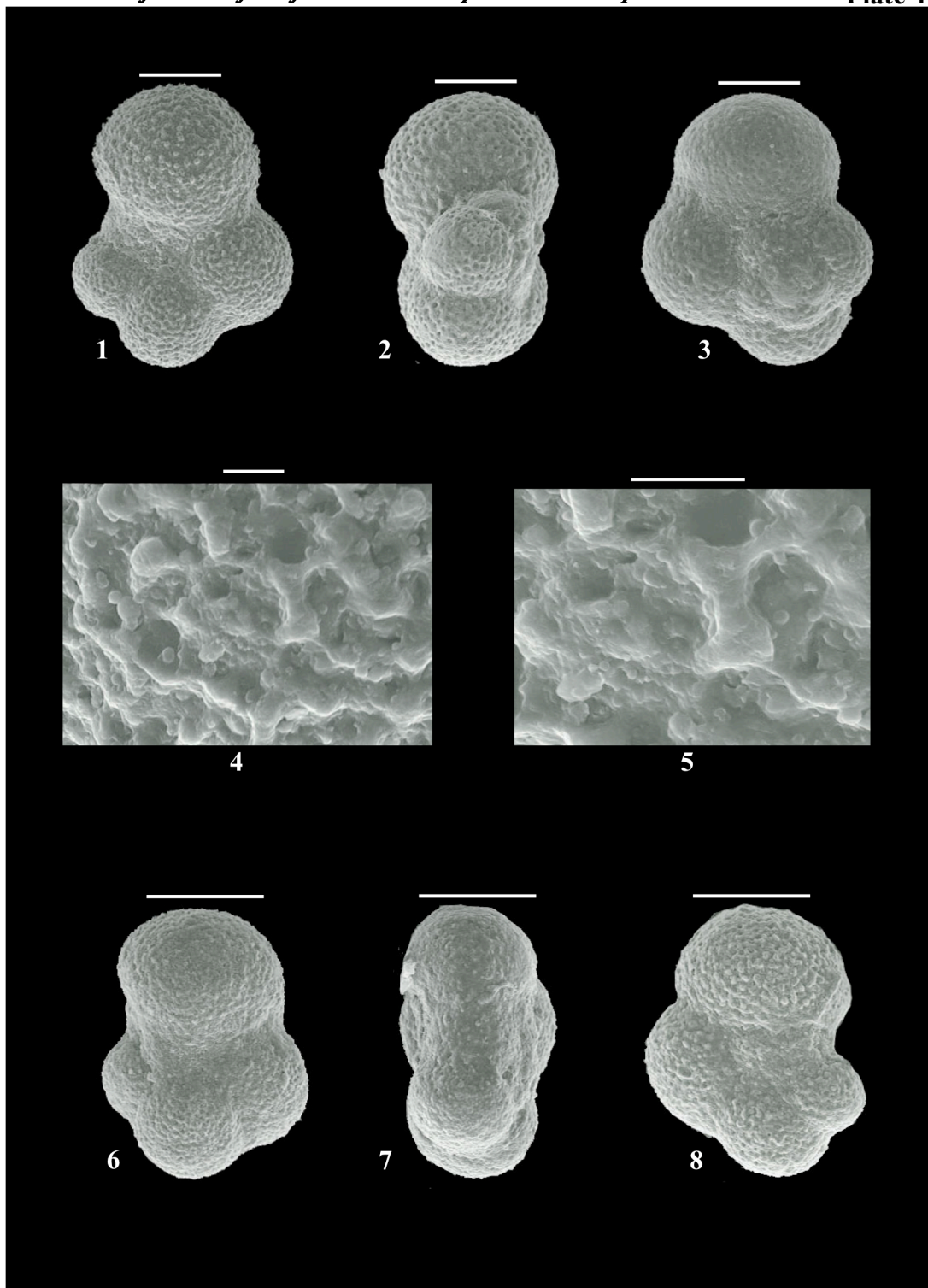


Plate 4. 1-8. *Globigerinella obesa*; Sample RO-3 (LO), Carapita Formation. Figures 1-3,6-8: bars=200 μm ; Figures 4-5: bars=100 μm .

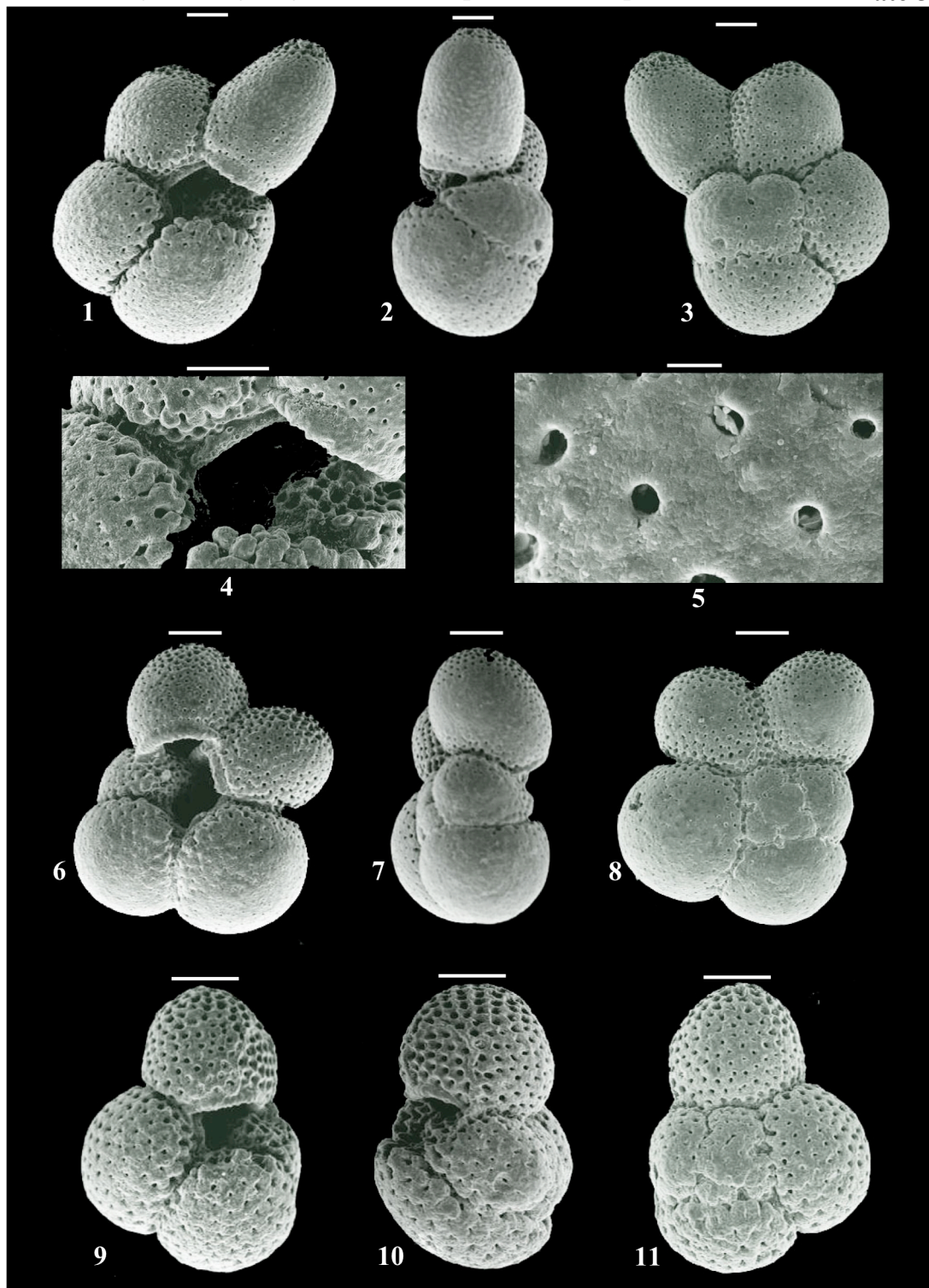


Plate 5. 1-8. *Sphaeroidinellopsis disjuncta*; Sample RDL-563, Cipero Formation. 9-11. *Sphaeroidinellopsis seminulina seminulina*; Sample WA 5510'-5540' (LO), Carapita Formation. Figures 1-3,6-11: bars= 200 μ m, Figures 4-5: bars= 100 μ m.

Planktonic foraminifera found in the Ciperó and Carapita

Plate 6

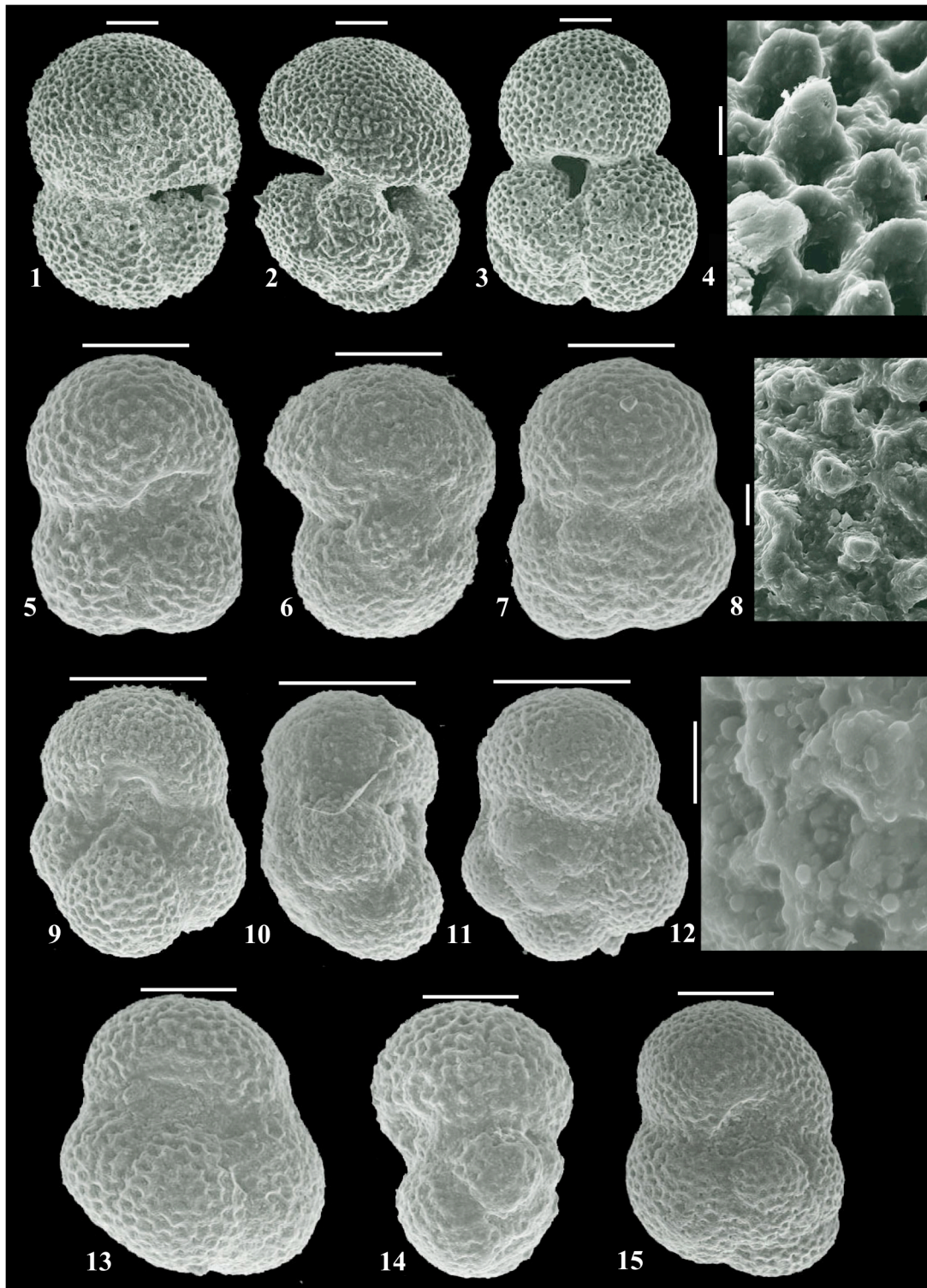


Plate 6. 1-4. *Globigerinoides trilobus*; Sample BO-287, Ciperó Formation. 5-8. *Globigerinoides trilobus*; Sample RO-1 (LO), Carapita Formation. 9-15. *Globigerinoides altiaperturaus*; Sample RO-21 (HO), Carapita Formation. . Figures 1-3,5-7,9-12,13-15: bars= 200 µm; Figures 4,8,12: bars= 100 µm.

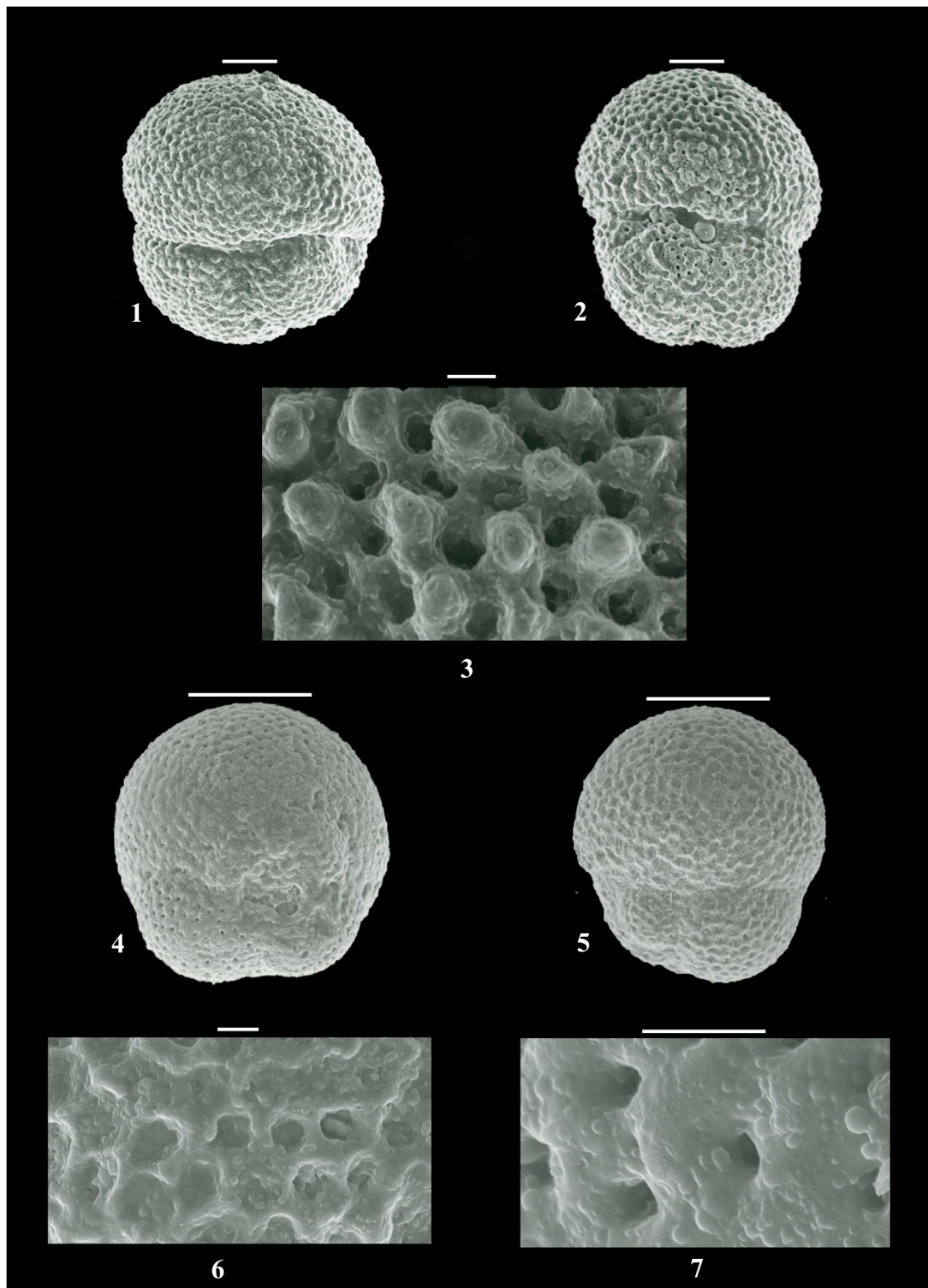


Plate 7. 1-3. *Globigerinoides bisphericus*; Sample RDL-423, Cipero Formation. 4-7. *Globigerinoides bisphericus*; Sample RO-27 (LO), Carapita Formation. Figures 1-2,4-5: bars= 200 μm ; Figures 3,6,7: bars= 100 μm .

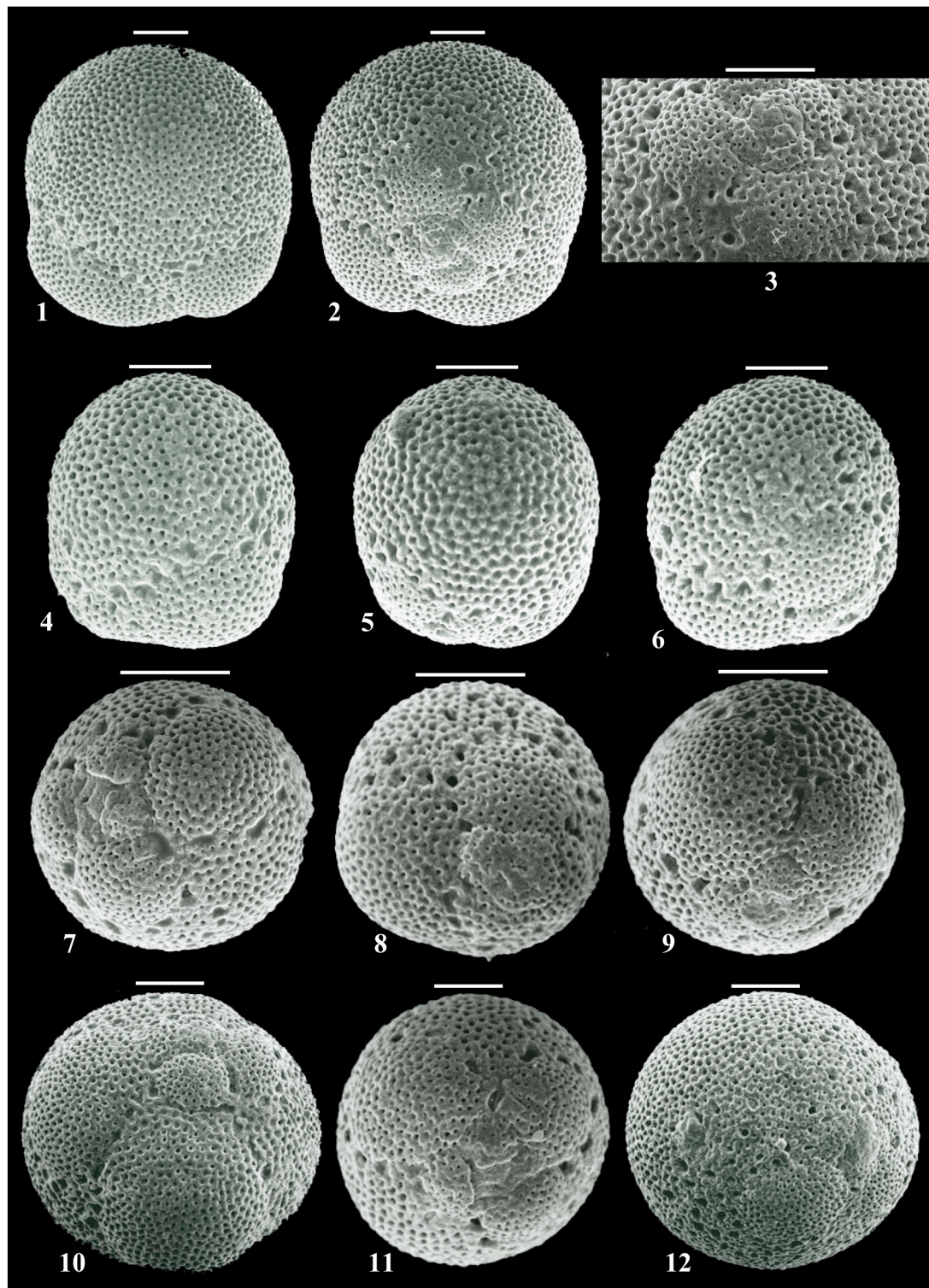


Plate 8. 1-6. *Praeorbulina glomerosa* group; Sample RDL-423, Cipero Formation. 7-12. *Praeorbulina glomerosa circularis*; Sample RDL-423, Cipero Formation. Figures 1-2,4-12: bars= 200 μ m; Figures 3: bars= 100 μ m.

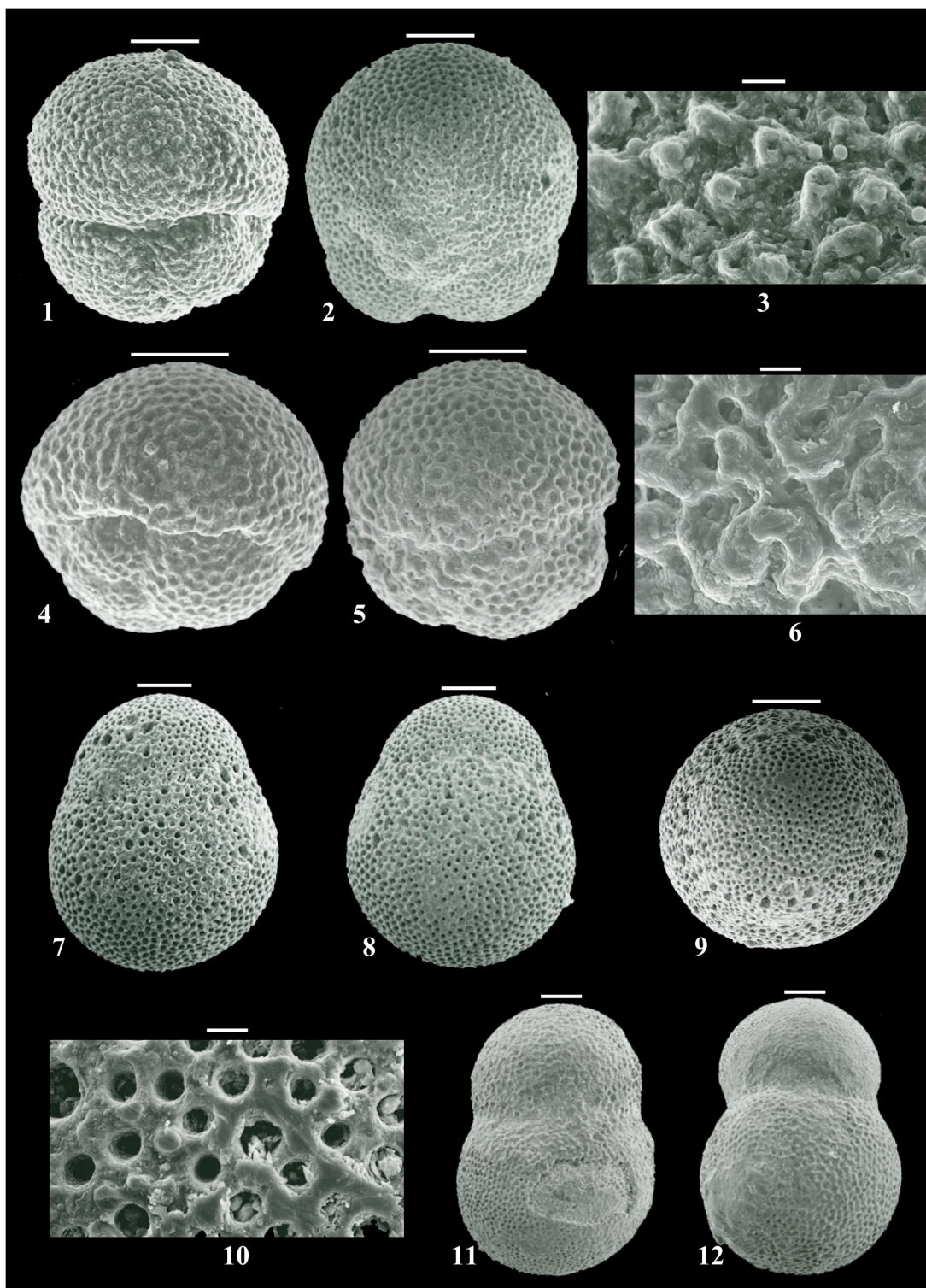


Plate 9. 1-3. *Praeorbulina sicana*; Sample RDL-423, Ciperó Formation. 4-6. *Praeorbulina sicana*; Sample WC 7040'-7050', Carapita Formation. 7-9. *Orbulina bilobata*; Sample RDL-538, Ciperó Formation. 10-12. *Orbulina bilobata*; Sample WC 5230'-5260'(HO), Carapita Formation. Figures 1-2,4-5,7-9,11-12: bars= 200 µm; Figures 3,6,10: bars= 100 µm.

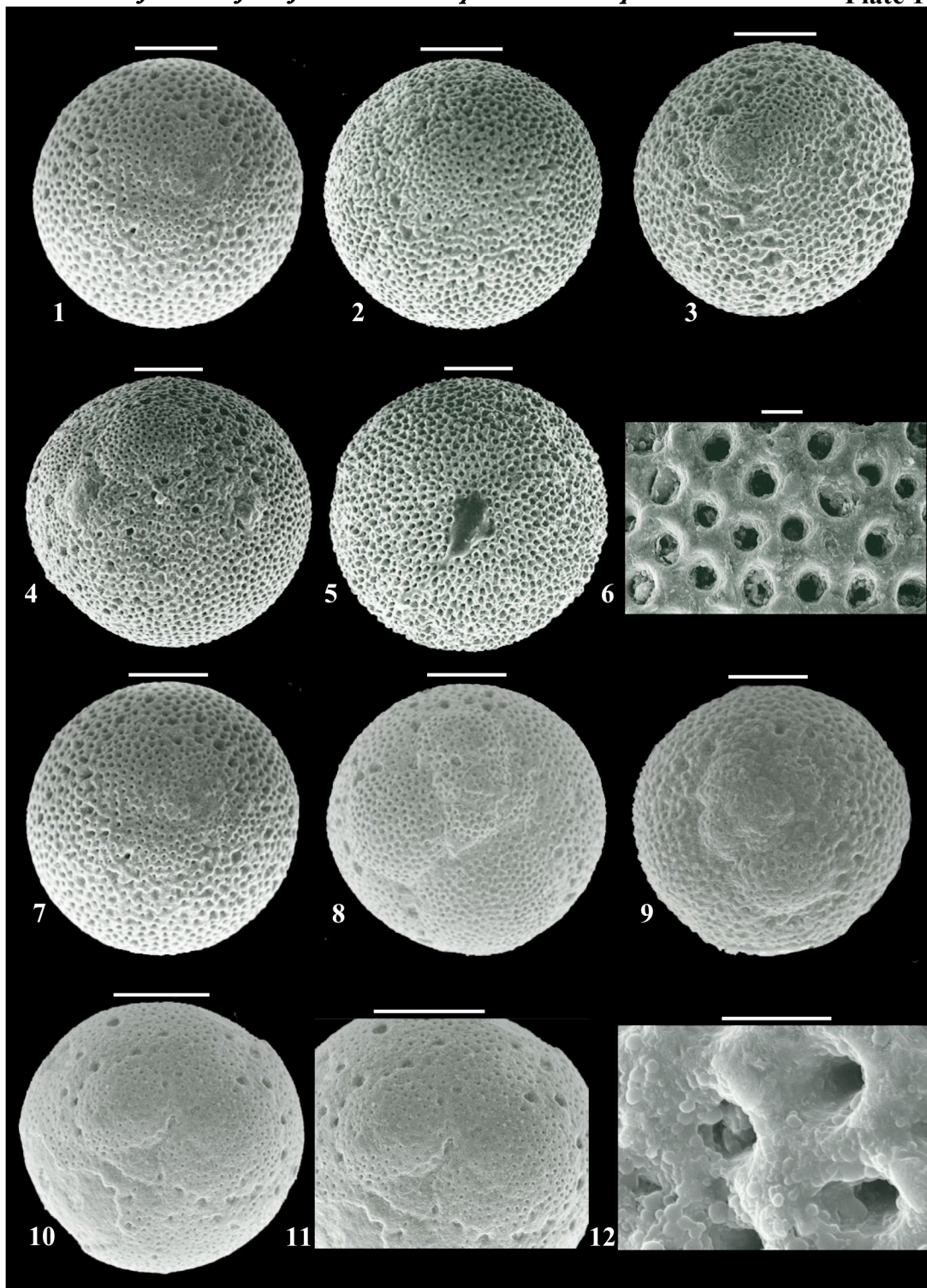


Plate 10. **1-6.** *Orbulina universa*; Sample RDL-538, Cipro Formation. **7-12.** *Praeorbulina glomerosa circularis*; Sample RO-47 (LO), Carapita Formation. Figures 1-5,7-10: bars= 200 µm; Figures 6,11-12: bars= 100 µm.

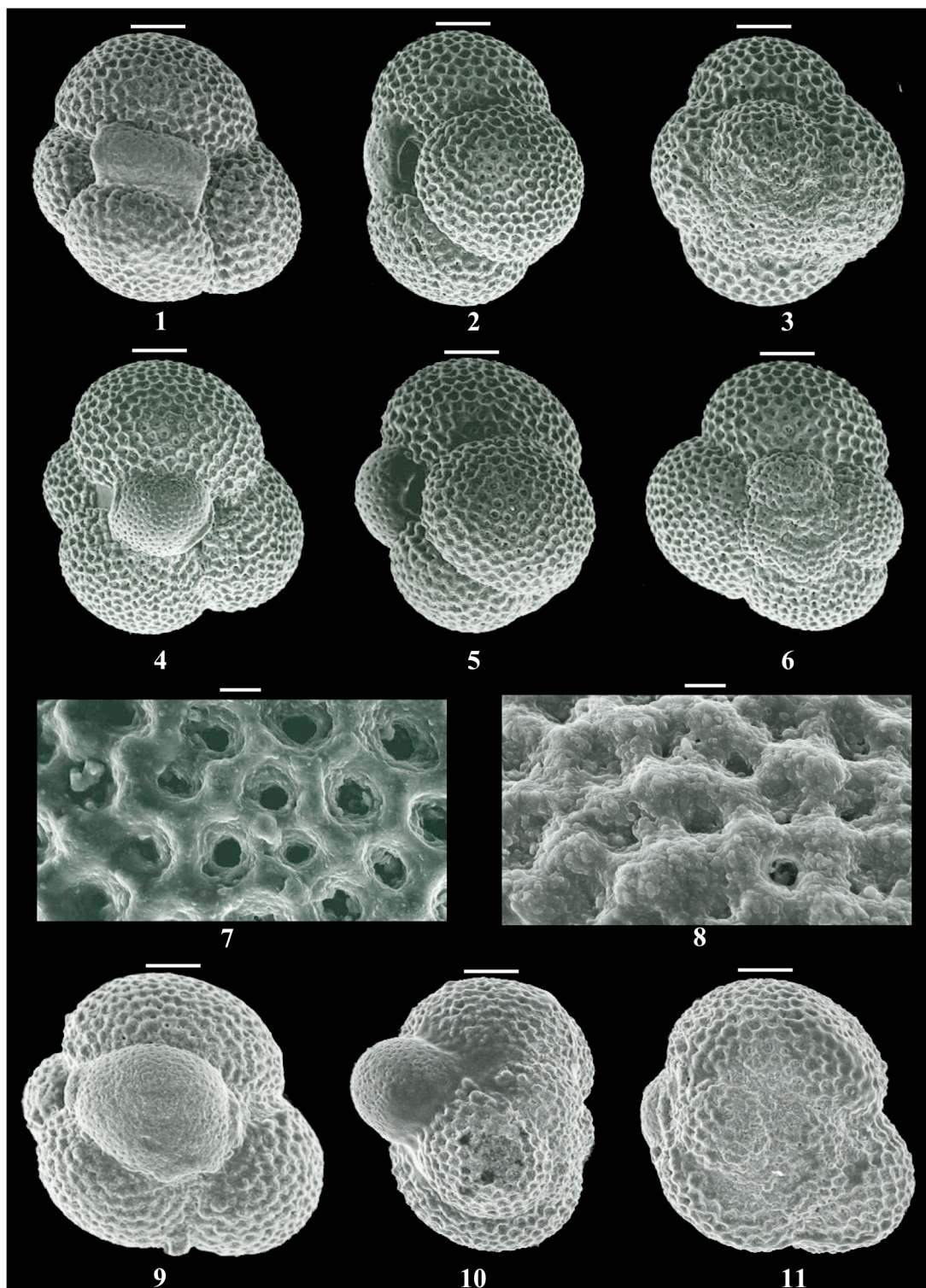


Plate 11. **1-7.** *Catapsydrax dissimilis dissimilis*; Sample BO-287, Ciperó Formation. **8-11.** *Catapsydrax dissimilis dissimilis*; Sample RO-25 (HO), Carapita Formation. Figures 1-6,9-11: bars= 200 μ m; Figures 7-8: bars= 100 μ m.

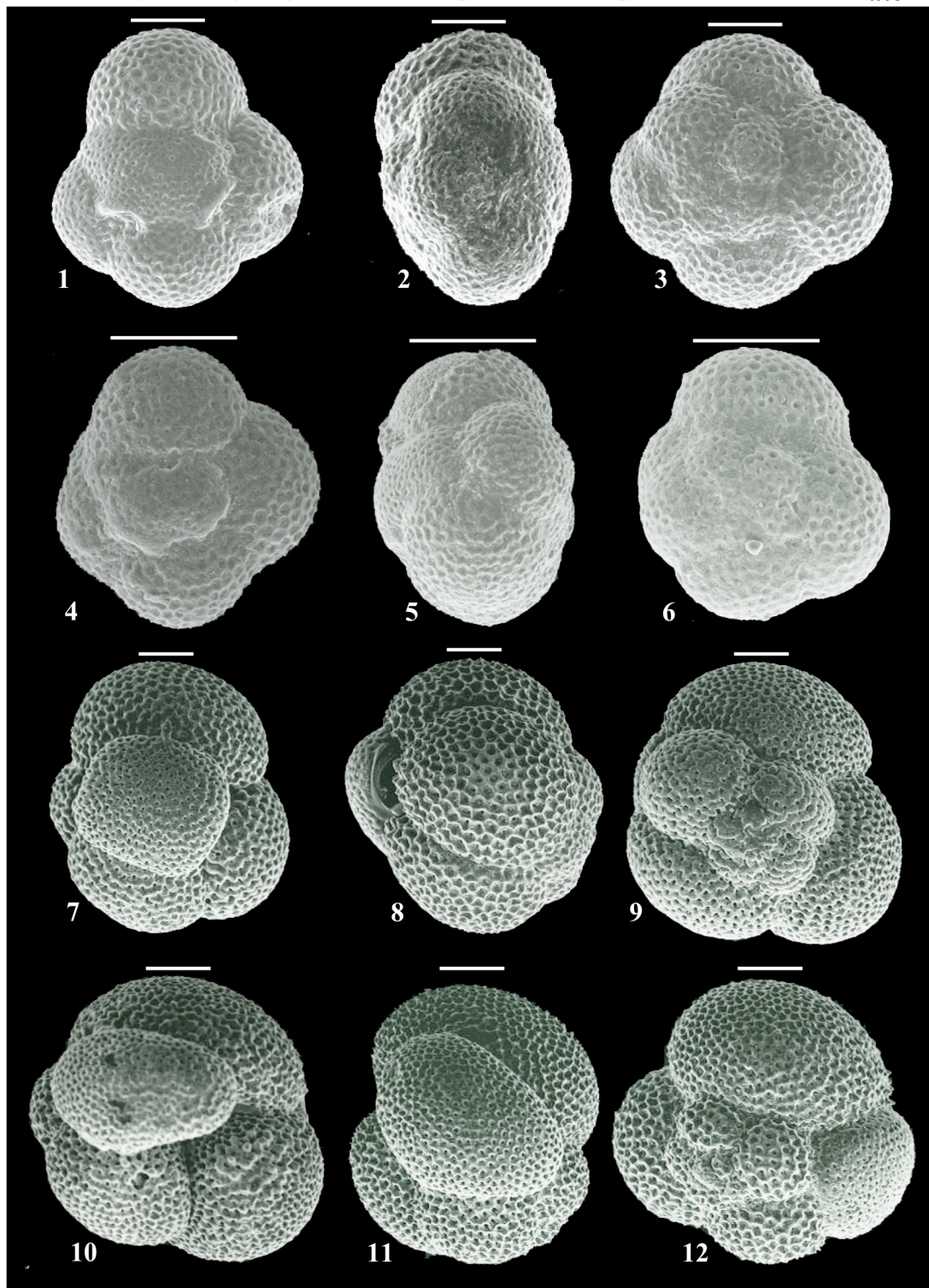


Plate 12. 1-6. *Globorotaloides stainforthi*; Sample WA 7380'-7410' (HO), Carapita Formation. 7-12. *Globorotaloides suteri*; Sample BO-287, Cipero Formation. Figures 1-12: bars= 200 μ m.

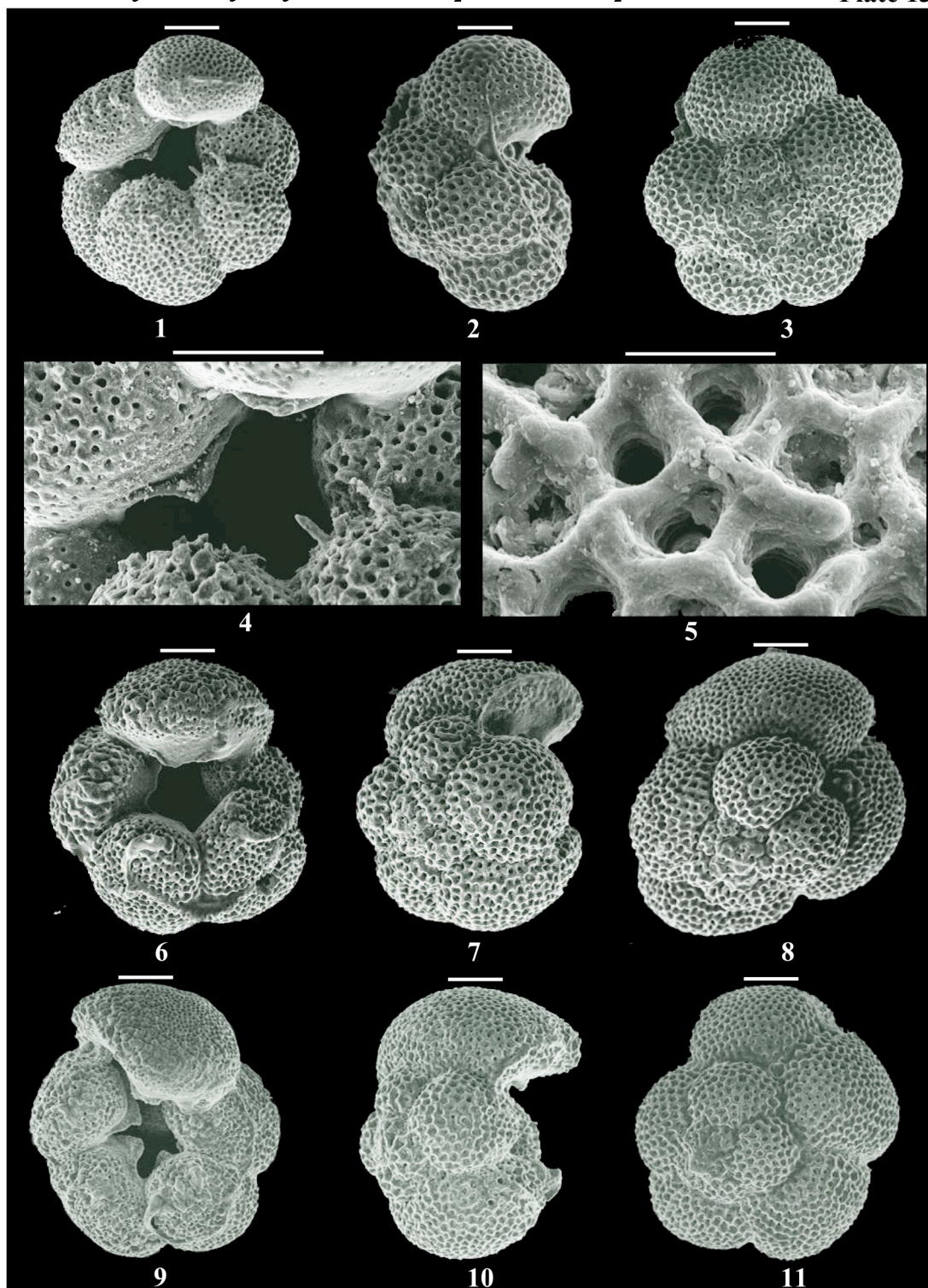


Plate 13. **1-8.** *Dentoglobigerina altispira globosa*; Sample BO-287, Cipero Formation. **9-11.** *Dentoglobigerina altispira globosa*; Sample RO-1 (LO), Carapita Formation. Figures 1-3,6-11: bars= 200 μm ; Figures 4-5: bars= 100 μm .

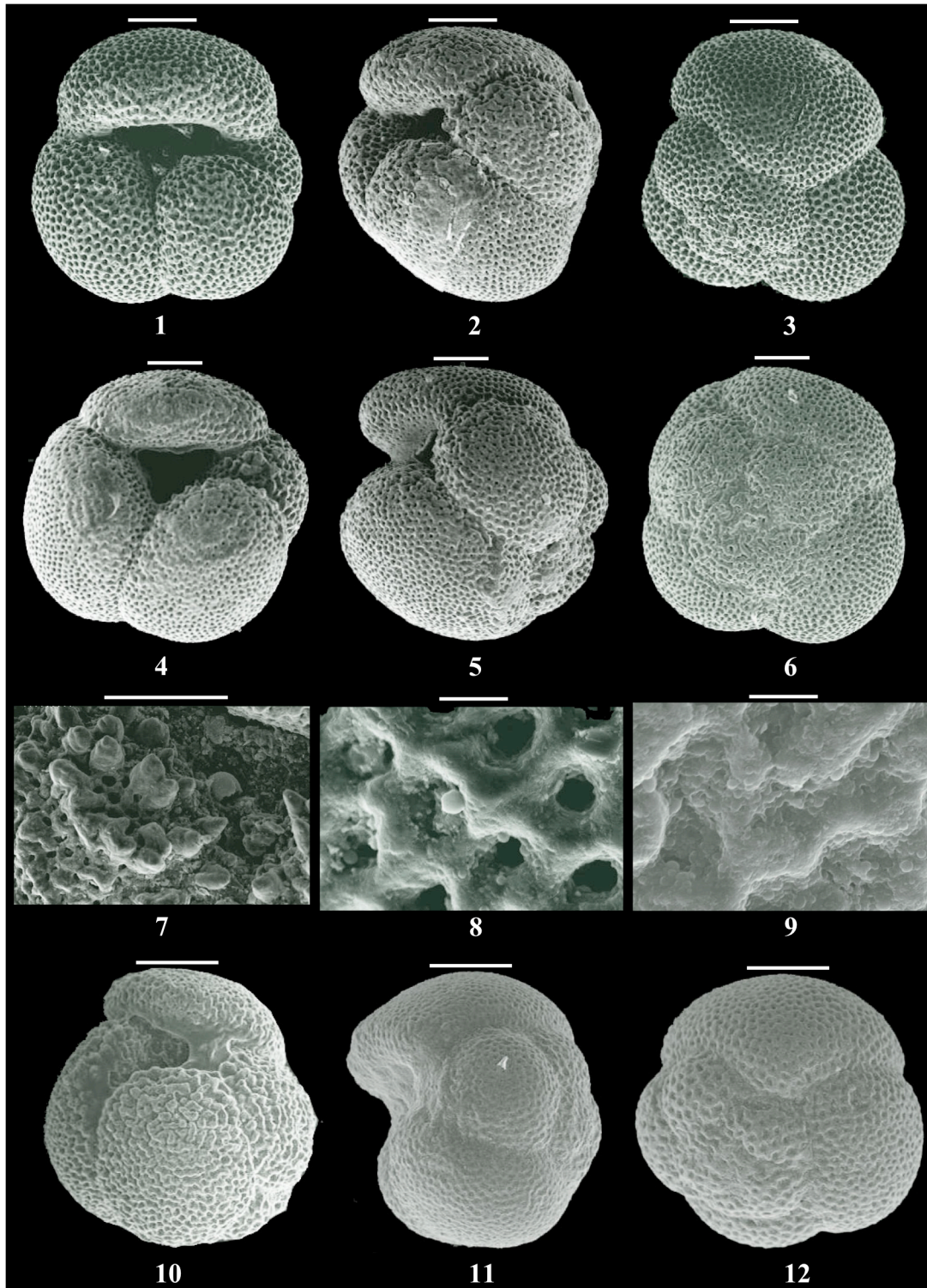


Plate 14. 1-8. *Dentoglobigerina venezuelana*; Sample BO-287, Ciperó Formation. 9-12. *Dentoglobigerina venezuelana*; Sample RO-1 (LO), Carapita Formation. Figures 1-6,10-12: bars= 200 μ m; Figures 1-8: bars= 100 μ m.

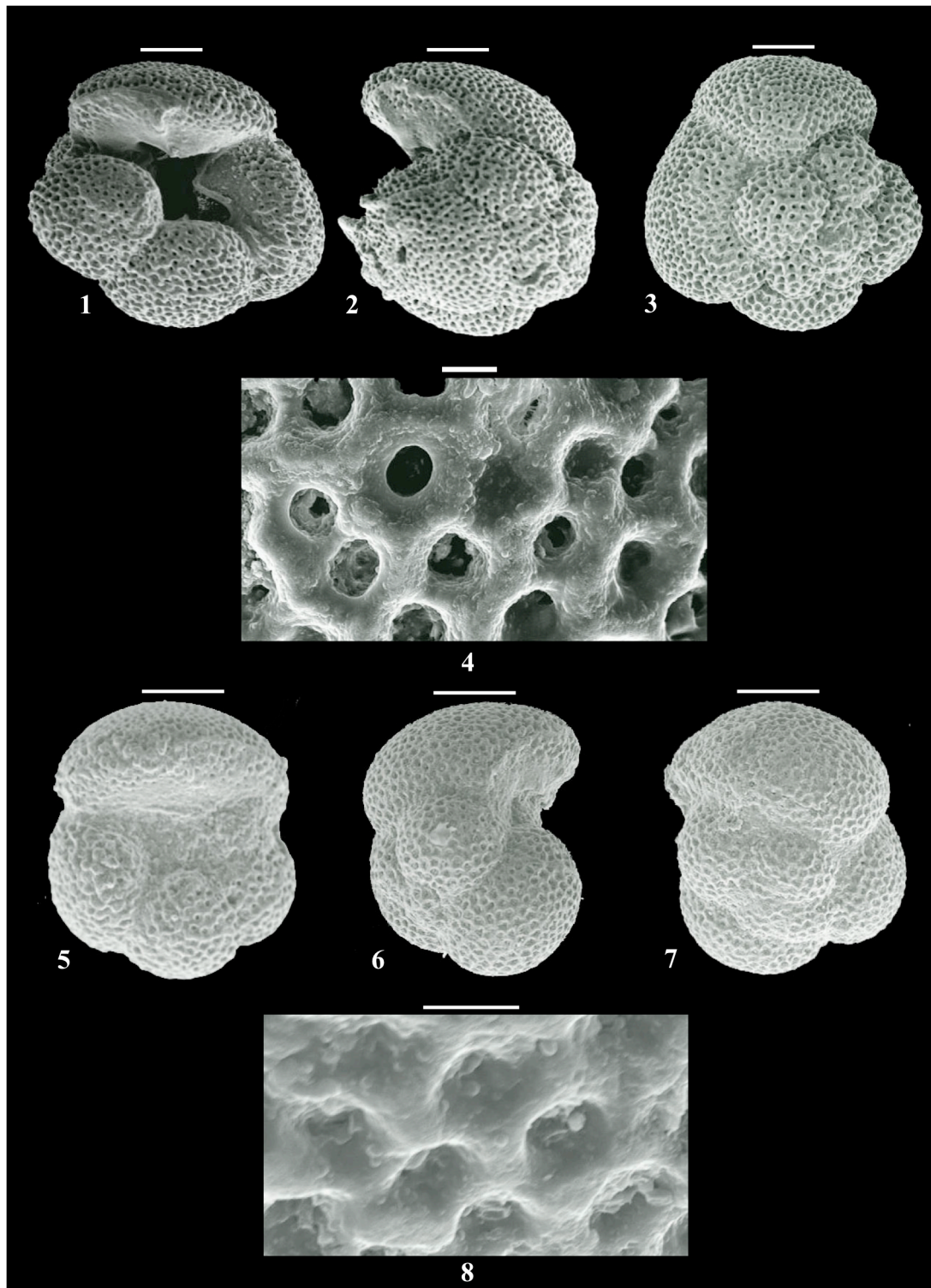


Plate 15. **1-4.** *Globoquadrina dehiscens*; Sample BO-287, Ciperó Formation. **5-8.** *Globoquadrina dehiscens*; Sample RO-15 (LO), Carapita Formation. Figures 1-3,5-7: bars= 200 μm ; Figures 4,8: bars= 100 μm .

Planktonic foraminifera found in the Cipero and Carapita

Plate 16

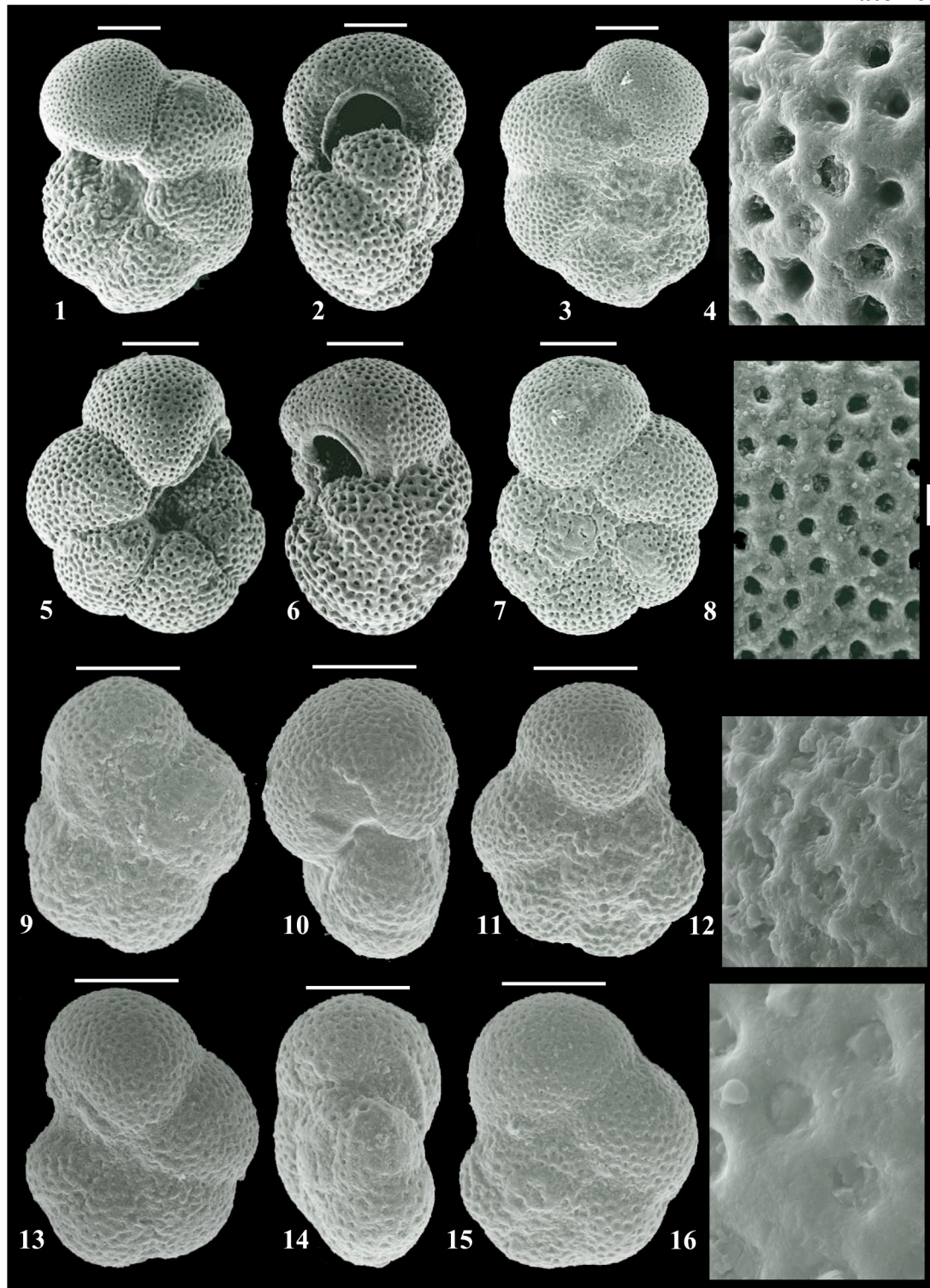


Plate 16. **1-8.** *?Neogloboquadrina siakensis*; Sample BO-287, Cipero Formation. **9-16.** *?Neogloboquadrina siakensis*; Sample RO-1 (LO), Carapita Formation. Figures 1-3,5-7,9-11,13-15: bars= 200 μ m, Figures 4,8,12,16: bars= 100 μ m.

Planktonic foraminifera found in the Ciperó and Carapita

Plate 17

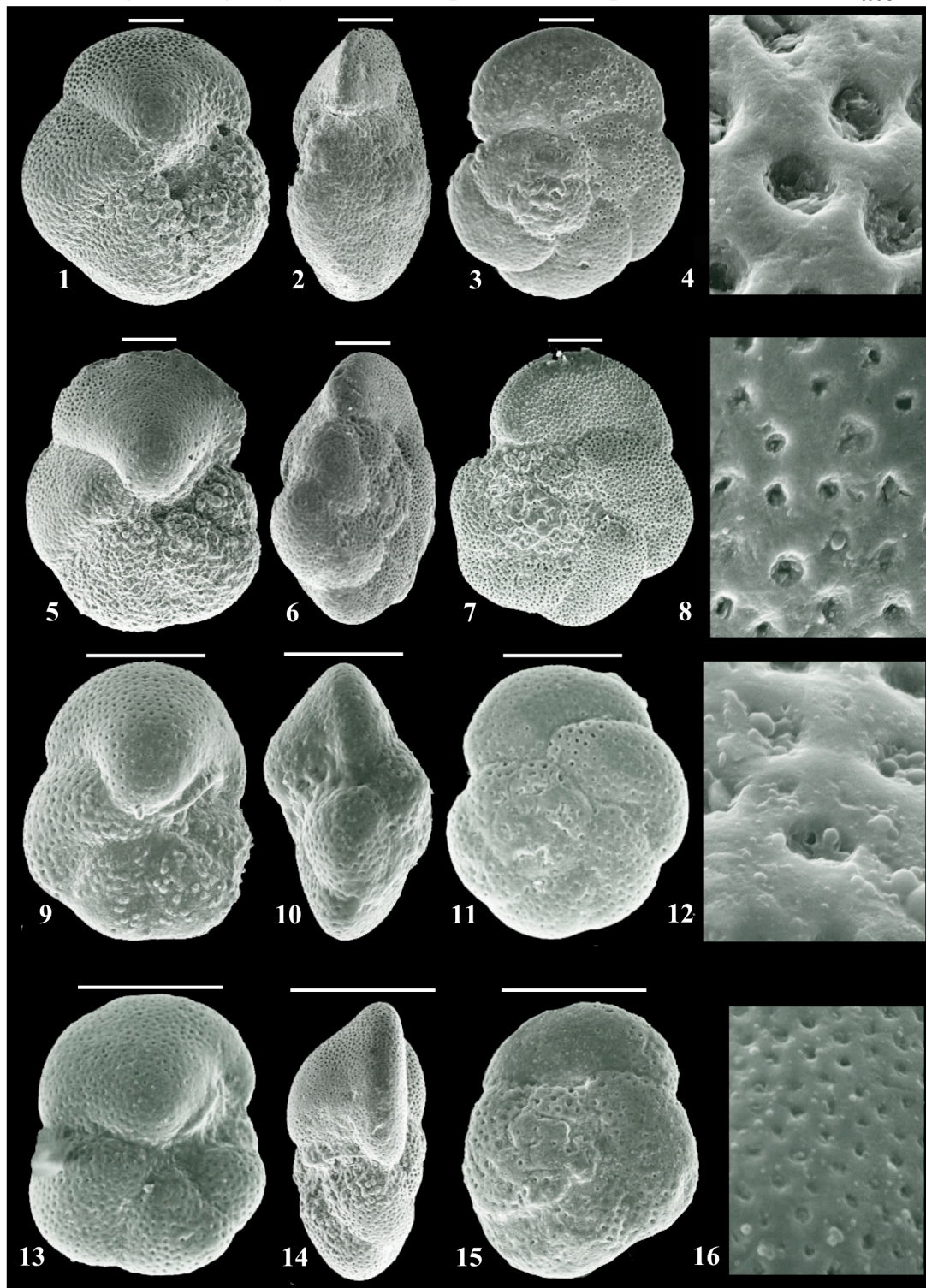


Plate 17. 1-8. *Globorotalia scitula*; Sample RDL-538, Ciperó Formation (LO). 9-16. *Globorotalia scitula*; Sample WA 5240'-5260' (LO), Carapita Formation. Figures 1-3,5-7,9-11,13-15: bars= 200 μm; Figures 4,8,12,16: bars= 100 μm.